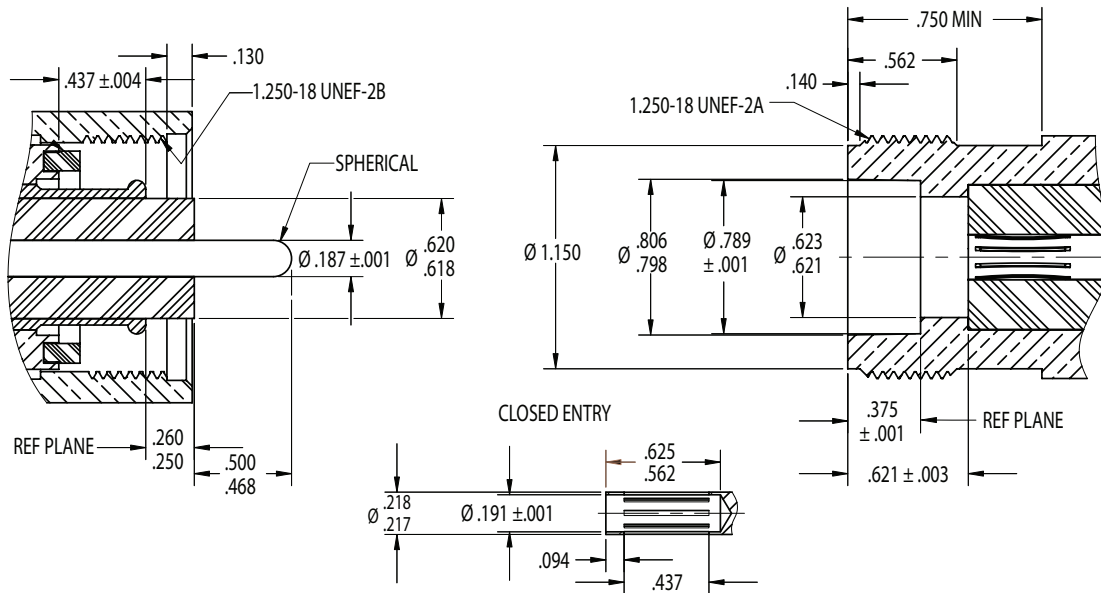




The Power of Creativity™

LT INTERFACE



ELECTRICAL

| | |
|---------------------------------|-----------------|
| Nominal Impedance | 50 ohms |
| Frequency Range | DC to 1 GHz |
| Voltage Rating | 5,000 volts rms |
| Dielectric Withstanding Voltage | 4,000 volts rms |

ENVIRONMENTAL

| | |
|------------------------|-----------------------------------|
| Temperature Range | -85°F to +329°F (-65°C to +165°C) |
| Vibration | MIL-STD-202 Method 204 |
| Shock | MIL-STD-202 Method 213 |
| Moisture Resistance | MIL-STD-202 Method 106 |
| Corrosion (salt spray) | MIL-STD-202 Method 101 |

MECHANICAL

| | |
|------------------------|--------------------------------|
| Mating Characteristics | per MIL-C-26637 or MIL-STD-348 |
| Connector Durability | 500 cycles min. |
| Recommended Torque | 75 in-lbs nominal |

MATERIALS / FINISHES

| | |
|--------------------|---|
| Body | Brass, Silver or Nickel Plated |
| Contacts (Inner) | Female: Beryllium Copper, Silver or Gold Plated. Male: Brass, Silver or Gold Plated |
| Contacts (Outer) | Brass, Silver or Nickel Plated |
| Contacts (Slotted) | Beryllium Copper, Silver or Nickel Plated |
| Insulators | Teflon |
| Gaskets & Seals | Silicone Rubber |

TRU Corporation

245 Lynnfield Street, Peabody, MA 01960 1-800-COAX-TRU (1-800-262-9878) www.trucorporation.com